



GAT MONTHLY MEMBERSHIP PROGRESS REPORT

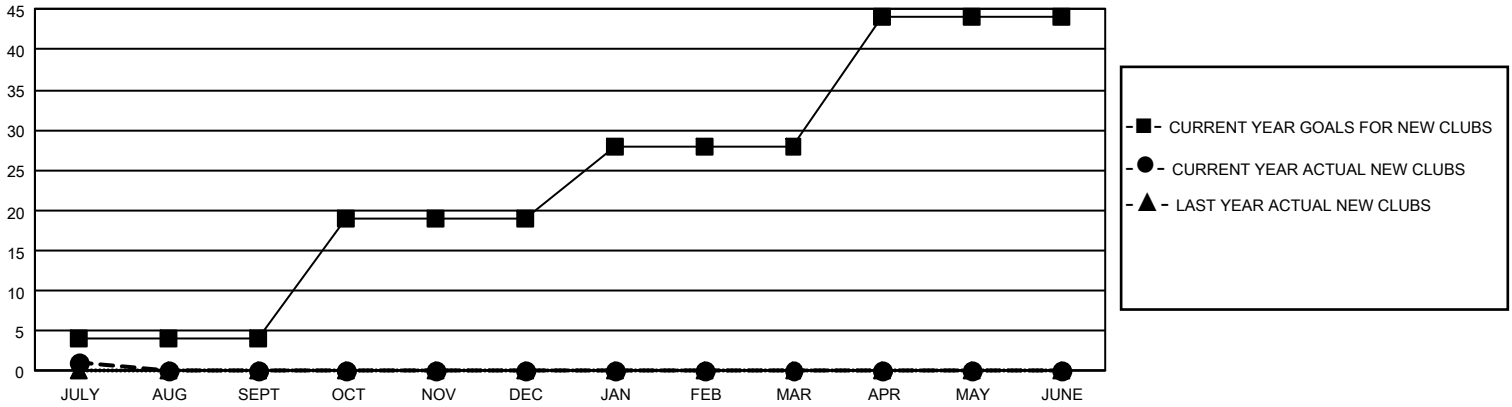
Results as of: 7/31/2023

GMT Constitutional Area 1, Group E

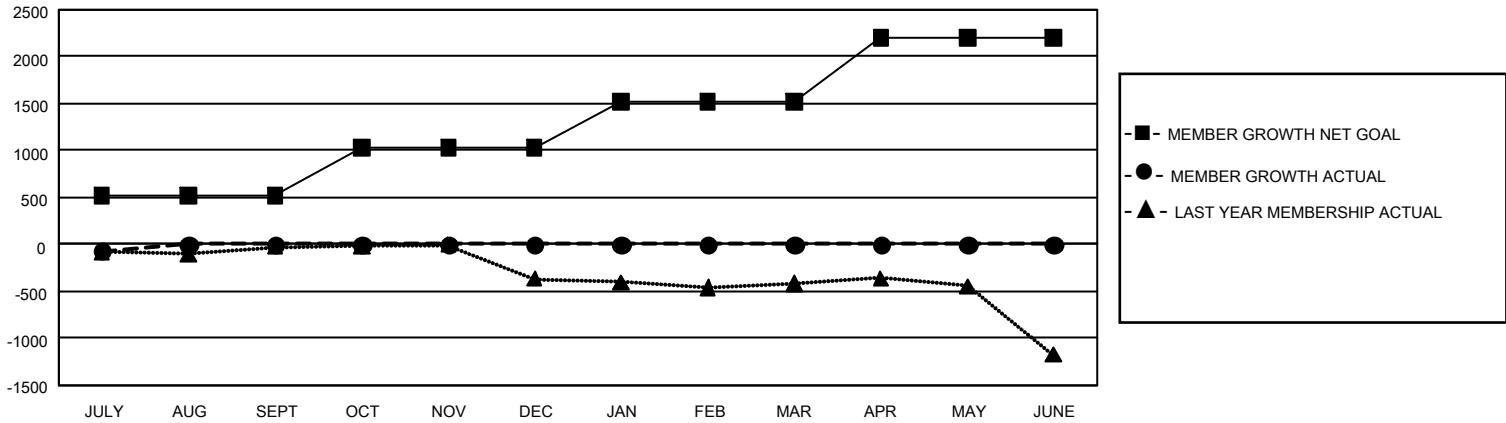
REPORT DOES NOT INCLUDE CLUBS IN UNDISTRICTED AREAS.

Clubs				Members			
RESULTS FOR 2023-2024				RESULTS FOR 2023-2024			
QUARTER	NEW CLUB GOAL	NEW CLUBS	DROPPED CLUBS	QUARTER	MEMBER GROWTH NET GOAL	MEMBER GROWTH ACTUAL	DROPPED MEMBERS ACTUAL (including transfers)
JULY/AUG/SEPT	12	1	6	JULY/AUG/SEPT	519	374	413
OCT/NOV/DEC	45	0	0	OCT/NOV/DEC	510	0	0
JAN/FEB/MAR	27	0	0	JAN/FEB/MAR	493	0	0
APR/MAY/JUNE	48	0	0	APR/MAY/JUNE	676	0	0

GOALS AND ACTUAL NEW CLUBS CUMULATIVE



GOALS AND ACTUAL MEMBERS CUMULATIVE



DROPPED CLUBS: 6	158 CLUBS OF 1,317 ADDED 1 OR MORE NEW MEMBERS	<u>GENDER DISTRIBUTION</u>	
		MALE 23,447 (68.00%) FEMALE 11,013 (31.94%) NON BINARY 1 (0.00%) PREFER NOT TO ANSWER 19 (0.06%)	
<u>DROPPED MEMBERS</u>		CLICK HERE FOR CUMULATIVE MEMBERSHIP DATA	TOTAL FAMILY UNIT MEMBERS 6,537
DECEASED 52 CLUB CANCELLED 0 OTHER 361 TOTAL 413			FAMILY MEMBERS PAYING HALF DUES 3,356